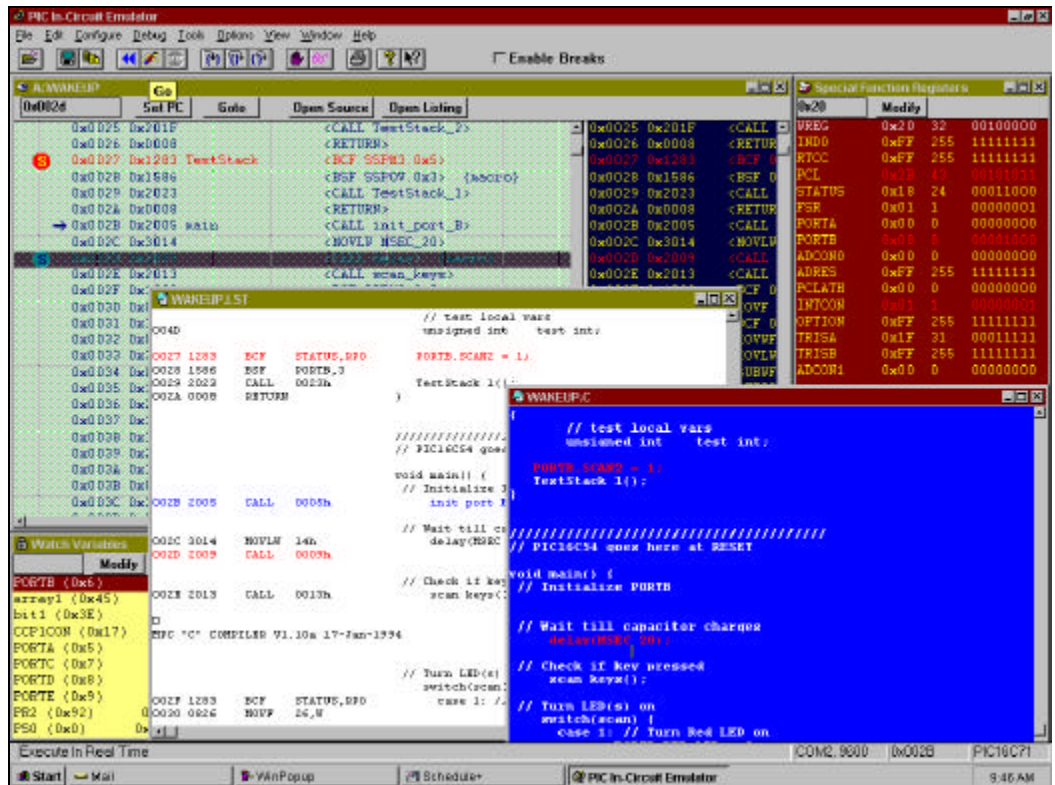


## MODULAR PIC16CXX LOW COST REAL TIME EMULATOR

- FULL SPEED, REAL TIME EMULATION.
- CAN EMULATE ALL PIC 16C6X, 16C7X, 16C8X, 16C9X.
- SOURCE LEVEL DEBUG IN ASSEMBLER OR "C".
- MICROCHIP EMULATION CHIP INSIDE!
- 8K OF 16CXX EMULATION MEMORY
- COMPATIBLE WITH MICROCHIP'S SOFTWARE TOOLS (INCLUDING MPC "C" COMPILER).
- HIGH SPEED RS232 INTERFACE (57.6Kbps ).



- RUNS UNDER MICROSOFT WINDOWS 3.X & Win95.
- SIMPLE TO USE TOOLBAR.
- UNLIMITED NUMBER OF BREAK POINTS.
- SINGLE, MULTIPLE & PROCEDURE STEP.
- DISPLAY & MODIFY ANY REGISTER (PROGRAM OR DATA).
- DISPLAY & WORK IN HEX/DEC/BIN.
- USER SELECTABLE PROCESSOR SPEEDS (VIA OSCILLATOR MODULE).
- SAME INTERFACE AS STANDARD ICEPIC
- FULL CONTEXT SENSITIVE HELP.



TECHNICAL SPECIFICATION		
FEATURES	SPECIFICATION	COMMENTS
Emulation Speed	32KHz to 20MHz	Driven from Interchangeable 'OSC Module' or target board input Maximum speed limited only by Emulation chip PIC16C03.
Emulation Memory	8K	8K words of 16CXX memory
Real Time Trace	No	Available on ICEPIC2
IDE	Yes	Same Integrated Development Environment, for ICEPIC-Jnr-16, ICEPIC & ICEPIC2
Source Level Debug	Yes	MPASM Compatible (Microchip Assembler)
"C" Source Level Debug	Yes	MPC (Bytecraft) & Microchip C-Compiler Support
Freeze Mode	Yes	Peripherals run/stop when halted, software controlled
Break Points	Yes	Effectively unlimited number of Break Points
Stack Breaks	Yes	Overflow/Underflow detect
WDT Breaks	Yes	Overflow break
Stack View	Yes	Direct Stack watch window available
Custom WatchPoints	Yes	Multibyte watch points can be set and modified
Assembler Support	MPASM	Microchip Universal Assembler Support
User Interface	Windows	MS Windows 3.1, & Win95
Host Interface	RS-232"C"	Communications Speed up to 57.6Kbps
Power Supply	9V @ 300mA	Power supply available as Optional Accessory

Developed under contract from Microchip Technology Inc, The ICEPIC-Jnr-16 is a modular Real Time Emulator system for Microchip's PIC microcontrollers.

The ICEPIC-Jnr-16 is supplied as a system, including emulator unit, RS232 cable, PIC target probe cables, full supporting documentation and software (including Microchip's MPASM). The system requires one of the 'Personality Daughter Board' modules to configure it to handle the range of PIC devices as listed below.

The system had the same comprehensive Windows GUI operating system as The standard ICEPIC emulators, which also includes the ability to generate DDE links to other applications such as Microsoft Excel etc.

Source level debugging is provided to give the user a quick and easy method of developing the target application in the minimum of time.

The system requires only a power supply to operate. (Same PSU as supplied with Microchip's PICSTART)

PIC MICROCONTROLLER;	COMPLETE SYSTEM (Including Personality Board)	PERSONALITY BOARDS
<b>ICEPIC-Jnr motherboard</b>	<b>ICEPIC-JNR-16</b>	-
16C554, 16C556, 16C558	<b>ICEPIC55X</b>	<b>ICEPIC-PB55X</b>
16C620, 16C621, 16C622	<b>ICEPIC62X</b>	<b>ICEPIC-PB62X</b>
16C62, 63, 64, 65, 72, 73, 74	<b>ICEPIC74A</b>	<b>ICEPIC-PB74A</b>
16C66, 67, 76, 77	<b>ICEPIC74A</b>	<b>ICEPIC-PB74A</b>
16C61, 16C71, 16C710, 16C711	<b>ICEPIC711</b>	<b>ICEPIC-PB711</b>
16F83, 16C84, 16F84	<b>ICEPIC84A</b>	<b>ICEPIC-PB84A</b>

EMULATOR OPTIONAL ACCESSORIES	PART No	
Enclosure	ICEPIC-ENCLOSURE	
International Power Supply 110-240Vac (IEC I/P)	ICEPIC-PSU-INTL	
Power Supply 240Vac (UK Type)	PSU-104017	

Please check with our Sales Department for the latest availability of new personality Daughter Boards which may not be listed above. For further information and demonstration software please visit our web site!

<http://www.rfsolutions.co.uk>

E-mail [sales@rfsolutions.co.uk](mailto:sales@rfsolutions.co.uk)